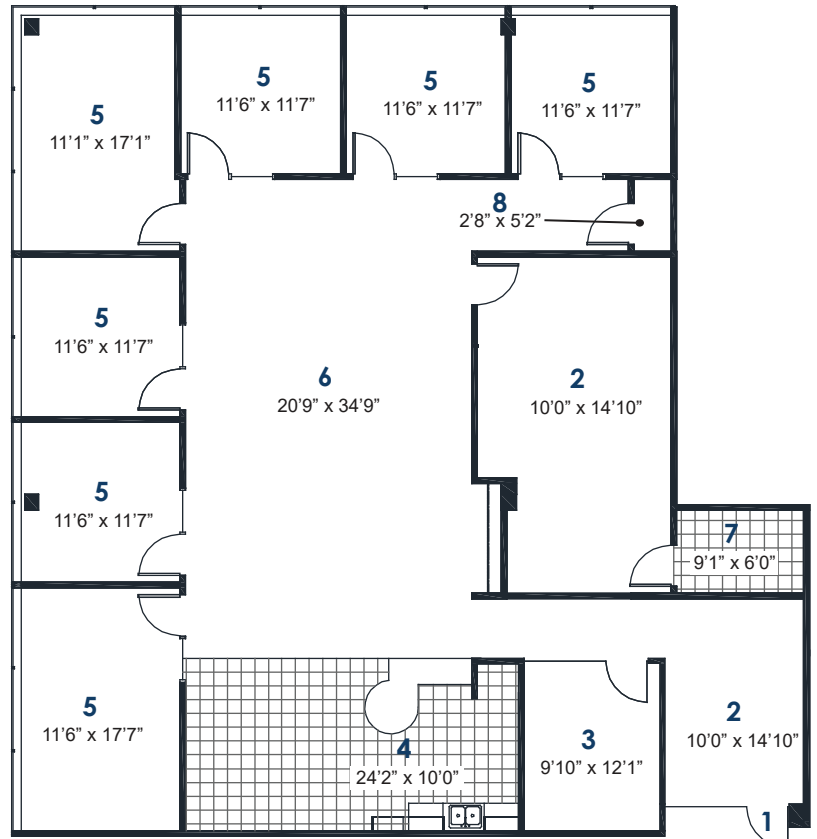


THE ATRIUM

AT CENTERPOINT CORPORATE PARK



Open & Collaborative

WORK ENVIRONMENTS

Large Contiguous Spaces for Growing Companies

Pre-Built Insta-Suites for Smaller Companies

Link-Able Suites for Easy Expansion



FOUNTAINHEAD NORTHWEST LLC

6801 S. 204th Street, Suite 110, Kent, WA 98032

253.395.9226 www.fountainheadnorthwest.com

SUITE 280
3,783 RSF

- (1) Entry
- (2) Reception
- (3) Conference RM
- (4) Break RM
- (5) Office
- (6) Open Office Space
- (7) I.T.
- (8) Storage



ATRIUM MAIN LOBBY



ATRIUM SEATING LOUNGE



ATRIUM EATING LOUNGE



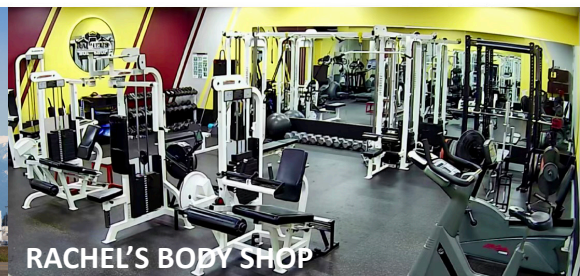
ATRIUM CONFERENCE ROOM



ATRIUM GYM



NEARBY SEA-TAC AIRPORT



RACHEL'S BODY SHOP



BRIGHT HORIZONS



FOOD TRUCKS



SKOODER'S HOTDOGS



ONSITE NATURE WALK ROUTES



NEARBY SHOPPING MALL



ONSITE TRANSPORTATION ROUTES

CLOSE TO EVERYTHING

Shopping, hotels, restaurants, entertainment, schools and housing are just a short drive away.

ACCESS TO FOUR MAJOR HIGHWAYS

Interstate 405, Interstate 5, Interstate 405 and Highway 167.

SHORT DRIVING DISTANCES

Southcenter (5 minutes), Kent Station (5 minutes), Sea-Tac (8 minutes), Seattle (20 minutes), Bellevue (25 minutes) and Tacoma (28 minutes).